

**Application Note**

**87011 – Bias Aperture Insulator (EMER)**

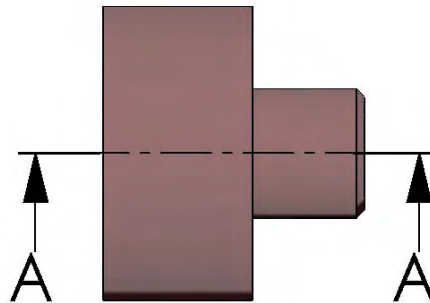
- **Features Added to Prevent Coating related shorting**
- **High Purity Materials**
- **Extended Life Design**

Electro-Graph currently offers an upgrade to the standard Bias Aperture Insulator, Axcelis Cross Ref.# 17174410, offered by Axcelis. By incorporating a deep groove and second shelf on the insulator, coating related failures are reduced substantially. Vast improvements on part life ranging from 3 to 10x have been observed with this new design.

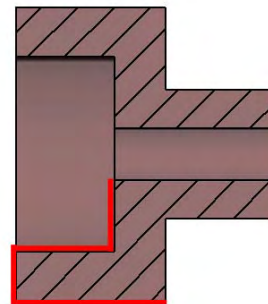
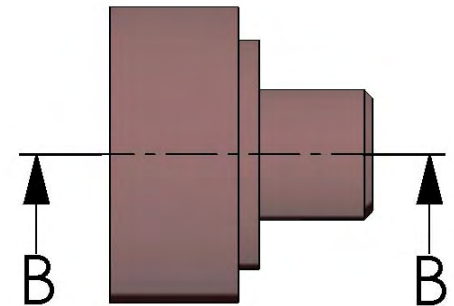
**Parts**

**87011**      **Modified Bias Aperture Insulator**

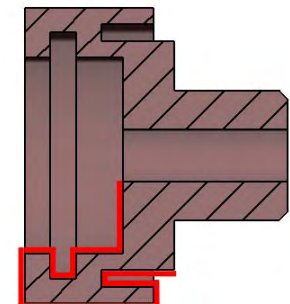
**Standard Part**  
**Cross Ref.# 17174410**



**Upgraded Part**  
**E/G# 87011**



**Coating Path**  
**(0.887 in Long)**



**Coating Path**  
**(1.212 in Long)**

