

# App. Note

## TEL ECLIPSE/SOLARIS Series Bearing Latch

- Bolt-on Upgrade
- Reduced COO
- Extended Life
- Reduce Latch Pressure
- Universally Configurable to all Latch Positions
- High Temperature Operation

The Electro-Graph designed bearing latch assembly is a bolt-on upgrade for clockwise (CW), counter-clockwise (C-CW), and universal style roller latches. The roller bearing design utilizes four high precision bearings to reduce rotational torque and minimize wheel galling, scratching, and skipping. Front wheels are mounted on twin bearings to evenly distribute compressive loads while ensuring smooth rotation onto, and off of, wafer surfaces. Wide rear wheels are used to house a flangeless bearing. A fourth flanged bearing is mounted between the screw head and compression spring so as to eliminate latch 'snapping' associated with build-up of torsion within the compression spring. Bearing latches are expected to operate without cleaning up to 20K latch-and-unlatch cycles in even the most demanding high temperature applications.

Bearing latches are designed for servicing at customer-defined intervals using practices similar to standard latch assemblies. Minor and major rebuild kits are available for in-fab refurbishment.

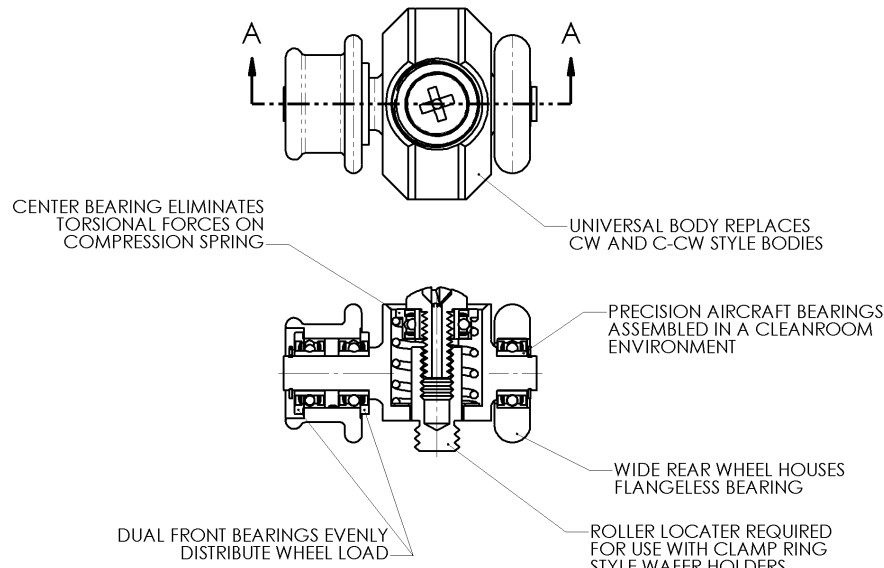
The bearing latch is configurable for base-weldment (wafer tab) and clamp-ring style wafer holders. Variations of the two basic units ([86127](#) and [88935](#)) are available for thin and ultra-thin wafer applications (i.e. reduced diameters and o-ring mountable wheels).

### Assembly

- [86127](#) Universal Roller Assy., Bearing
- [88935](#) Universal Roller Assy., BRG. CR

### Kit

- [91665](#) Major Rebuild Kt, Bearing Latch
- [91691](#) Minor Rebuild Kt, Bearing Latch, General



Using Latch Assy. No.	OEM	Replace with Bearing Latch Assy. No.
47583	Electro-Graph	<a href="#">86127</a>
47661	Electro-Graph	<a href="#">86127</a>
60595	Electro-Graph	<a href="#">86127</a>
60608	Electro-Graph	<a href="#">86127</a>
68499	Electro-Graph	<a href="#">86127</a>
68512	Electro-Graph	<a href="#">86127</a>
72815	Electro-Graph	<a href="#">86127</a>
73283	Electro-Graph	<a href="#">88935</a>
84424	Electro-Graph	<a href="#">88935</a>
A115450	TAZ/MRC	<a href="#">86127</a>
A115451	TAZ/MRC	<a href="#">86127</a>
A121392	TAZ/MRC	<a href="#">86127</a>
A122744	TAZ/MRC	<a href="#">88935</a>
A124957	TAZ/MRC	<a href="#">86127</a>
A124958	TAZ/MRC	<a href="#">86127</a>
A126846	TAZ/MRC	<a href="#">88935</a>
A127395	TAZ/MRC	<a href="#">88935</a>
A129060	TAZ/MRC	<a href="#">86127</a>

760.438.9090 - phone  
760.438.3923 - fax  
sales@egraph.com  
www.egraph.com

E/G Electro-Graph, Inc.  
2365 Camino Vida Roble  
Carlsbad, CA 92011-1505  
USA

**ELECTRO-GRAPH®**

