

App. Note

Applied Materials 9500 and xR Series Removable Pin Electrode Mounts

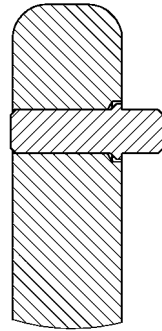
- Reduced COO
- Standard utilities and operation
- High purity materials
- Direct replacement for standard Applied Materials components

Assemblies

- 1.02.115 Extraction Assembly (Dual Bellows)
- 1.02.125 Extraction Assembly (xR and Leap)

Application Notes

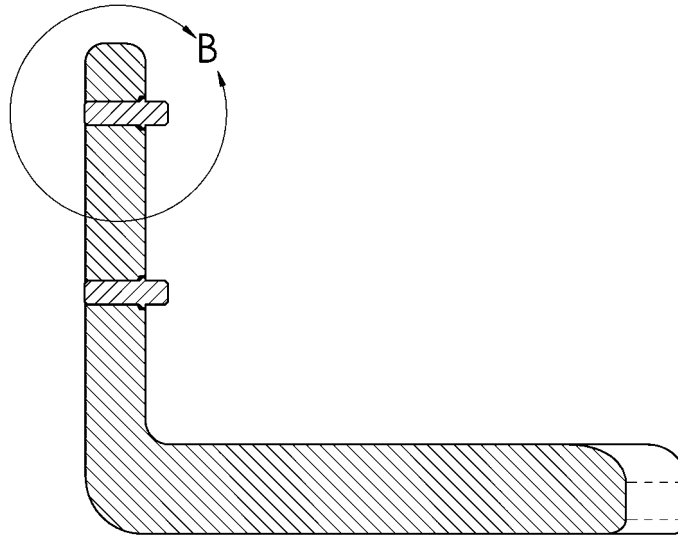
- 2.02.115 Electrode Configurations



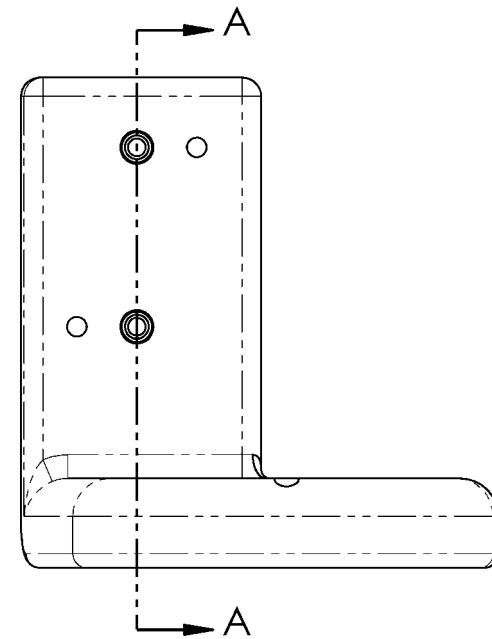
DETAIL B

This design differs from the OEM design in that the pins are not press fit into place. The removable pin electrode mounts allow for the pins to be replaced without replacing the whole part or having to forcefully remove broken pins. In this design, the pins are easily removed in the event of breakage or cleaning (see next page).

The pins are precision machined to maintain accurate positioning of the electrodes. A small flange on the pin ensures that it will not fall out when installed (see Detail B, left). In the tool, this flange is trapped between the mount bracket and the electrode mount plate, holding the pin in position.



SECTION A-A



2.02.116.1-9.6.01

760.438.9090 - phone
760.438.3923 - fax
sales@egraph.com
www.egraph.com

E/G Electro-Graph, Inc.
2365 Camino Vida Roble
Carlsbad, CA 92011-1505
USA

Forward

ELECTRO-GRAPH®